



## 59 Northumberland Street

Horden, Peterlee, SR8 4PX

**£119,950**



Situated on Northumberland Street in Horden, Peterlee, this absolutely stunning two-bedroom bungalow offers a perfect blend of modern living and charm. Built in 1920, the property has been fully refurbished from the ground up, ensuring that no expense has been spared in creating a comfortable and stylish home.

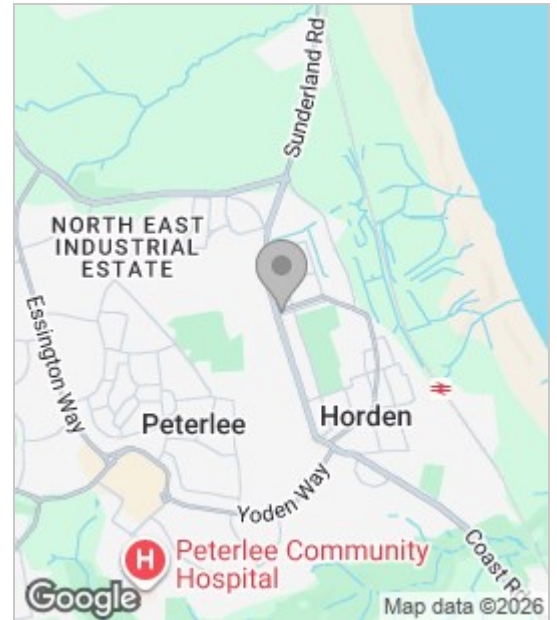
Spanning 538 square feet, this delightful bungalow features a spacious reception room that welcomes you with warmth and light. The two well-appointed bedrooms provide ample space for relaxation, while the loft room presents an exciting opportunity for an additional bedroom, subject to the necessary permissions.

The property boasts a low-maintenance design, making it ideal for those seeking a hassle-free lifestyle. The self-contained nature of the bungalow ensures privacy and tranquillity, while its proximity to bus routes offers excellent transport links for easy commuting.

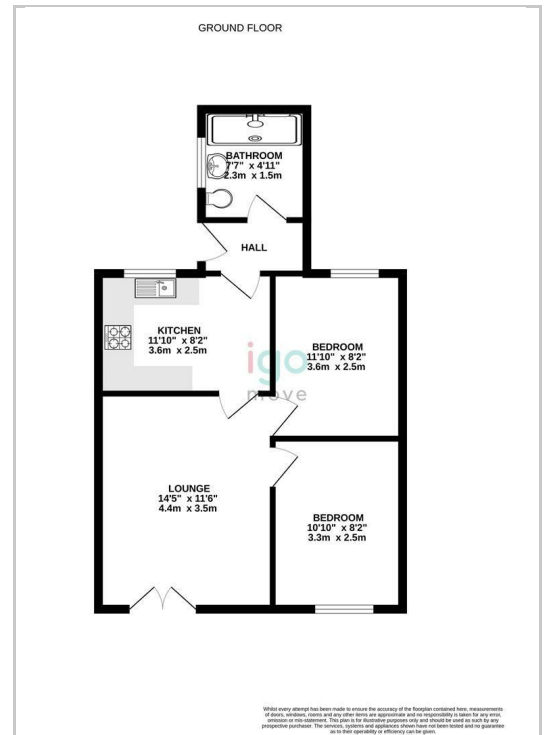
For those with vehicles, the resin driveway accommodates two cars, providing convenient off-road parking. With no onward chain, this property is ready for you to move in and make it your own.



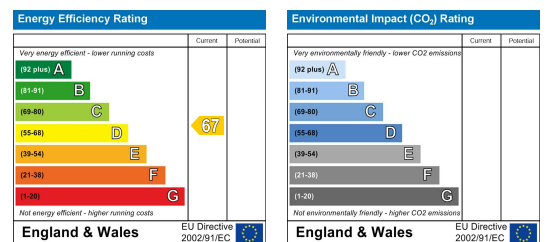
## Area Map



## Floor Plan



## Energy Efficiency Graph



These particulars, whilst believed to be accurate are set out as a general outline only for guidance and do not constitute any part of an offer or contract. Intending purchasers should not rely on them as statements of representation of fact, but must satisfy themselves by inspection or otherwise as to their accuracy. No person in this firm's employment has the authority to make or give any representation or warranty in respect of the property.